



See What The **EXPERTS** Have To Say About Their Con-Tech Mixers



"I have been in the Redi-Mix industry since 1975, first as a mechanic, and later as a manager and I have been around many different mixer types. Since adding the Con-Tech mixer to our fleet I have found the Con-Tech to outperform all others that we have used in the past. Faster to load (larger hopper), and faster to unload (at a low engine RPM). The detail in safety features, and the quality of the design of the front and rear pedestals, water tank mounting, and fin design can be attributed to Con-Tech's desire to give the customer and driver a good product you can put into service the day you receive it!"

Donald D Guerrero

FLEET EQUIPMENT MANAGER
ALLIED CONCRETE

"Con-Tech has provided us with the performance, durability and reliability our industry demands. Con-Tech has addressed several key components other manufacturers seem to have overlooked, and as a family business we appreciate the opportunity to do business with people as helpful and personable as the Con-Tech staff."



Lerin Jacobson

VICE-PRESIDENT,
PAULS VALLEY, OKLAHOMA



www.ctmmixers.com

phone 507-374-2239

fax 507-374-1094

From those who demand *Nothing but the Best!*

"I just wanted to let you know how satisfied we are with our Con-tech mixers. We greatly appreciate the time and ingenuity you have placed in designing our equipment. We have been running them almost three years and have had absolutely no problems with them. We have not had to change out a single part, which is almost unheard of in our industry. We also appreciate the level of commitment you have towards your customers. You have given us excellent customer's service after the sale. You always have good advice. Also thank you for making it such a breeze to finance our new equipment. Thanks, and keep up the good work."

Patrick Barry

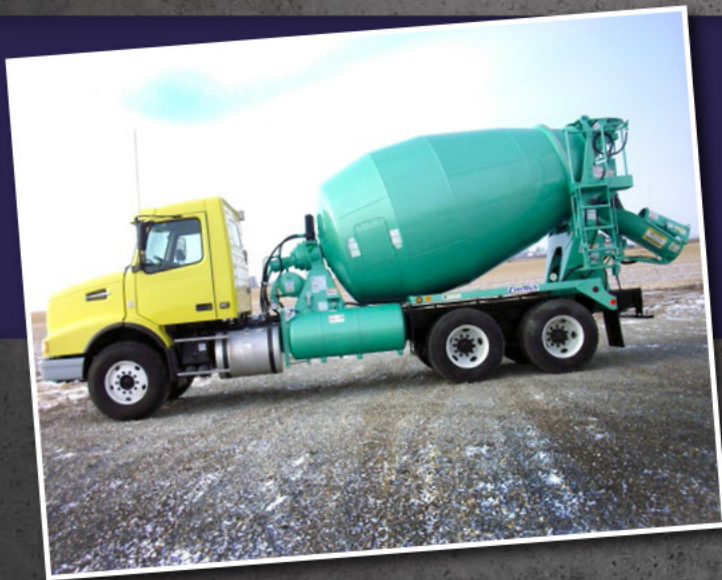
BARRY CONCRETE, INC., LAFAYETTE, LA



"It has been a pleasure doing business with Con-Tech Mfg. They always offer top quality products, personal service, and a knowledgeable staff to provide the parts and equipment to meet our business needs. Their experience in the mixer business is reflected in the products they sell."

Wade Williams

RIVER CITY CONCRETE, INC.
SAVANNAH, TN



"A couple of the common comments I received when talking with our drivers were the consistent flow of concrete when discharging the load, and how fast it could unload low slump concrete. This drum is second to none in that area when were paving. We are very pleased with this mixer."

Jon Henrich

GCC NCR
FLEET MAINTENANCE MGR

"Three things come to mind when I think Con-Tech. Honesty, Quality, and Performance. I finally have the choice I had been looking for to get a top quality product with the service and performance I expect and deserve. The staff is knowledgeable and personable, with knowledge of me, my business, and equipment needs. Doing business with Con-Tech reminds me of the way of doing business back in the good ole days!"

Larry Wittenburg

SPRINGVILLE READY MIX



More from the *Industry Leaders!*

"We have had a very positive experience working with Con-Tech. We really like their mixer drum and the performance we get in the field. There has not been a single complaint from our drivers since we started using Con-Tech mixers. They are very happy with them! I like the fit and finish, design differences, weld quality and finish are all first class! Parts and Service staff are knowledgeable and very helpful when we call."

Bill Turner
HOLROYD CO. INC



"We could not be happier with our two new 10 1/2 yard standard Con-Tech mixers. Our drivers love them! Smooth operation, will discharge low slump, as well as a controllable discharge of high slump or wheel barrow jobs. Matching treads for climbing a folded ladder (often overlooked). Excellent appearance of welds and paint quality. We have put 2800, and 3000 yards thru them and not had as much as one lose bolt! This was a large purchase for us, a small family ready mix business, and we made the right decision going with Con-Tech."

John and Jean Pipher
PRESIDENT AND VICE PRESIDENT
CUSTOM-MIX CONCRETE, INC. / NY



"After an exhaustive search for late model used mixer trucks, I began the process of new purchase. After contact with Con-Tech, the process ran very smoothly. Con-Tech started out the process with a very complete proposal. The information provided initially was detailed, but where Con-Tech shined was in communication and follow-up. Any time I had a question, I immediately had an answer. The mixers we wanted to purchase required a specific chassis specification that no one had in stock and would have to be special ordered. Due to a very high profile pour that was scheduled, our time frame was very confining. Merlyn and David were able to have existing chassis modified to suit our needs. Pictures arrived daily showing the progress of each unit as it moved down the line. Consequently, the trucks were delivered on time and equipped as promised. Once in use, the concrete manager was pleased to note how smoothly the new mixers poured difficult slump loads. As a result, I have ordered two new barrels of Con-Tech design to replace those of other manufacture on other trucks and am currently contemplating purchase of another new Con-Tech mixer truck. I am very satisfied with the process and the product."

Michael L. Lundberg
SCHELLINGER CONSTRUCTION
EQUIPMENT MANAGER

**EXTREME
DUTY**



BridgeKing



"What I like about the Con-Tech mixer is when you wash out, you don't have to spend a lot of time doing it because they are a self cleaning drum, and it does not take a lot of water to wash out. I also like the buttons on the rear control pendant because they are not delayed when you hit them. They are precise so you can have the drum barely move for pouring walls. I also like the aluminum extension chutes, they are light and easy to move around. I like the way the ball busters work inside of the drum. Since I have had the drum, I have not had any dry balls in the load. I also think that they produce better concrete out of the rear of the truck. I have noticed that the concrete is more consistent every pour I go to. In all I believe the Con-Tech mixer is better than the Oshkosh because of its consistency."

Derek Rieck
GCC READY MIX



"Con-Tech Manufacturing has proven to be a customer-focused company dedicated to building mixers customized to the customer's needs. Con-Tech's customization allowed us to cut our in service time from 7 days to about 8 hours. My experience with Con-Tech has been positive from the first phone call to follow-ups after the mixers were delivered."

Richard Tucker
GM MAINTENANCE
GEIGER READY MIX CO., INC.

"In this past season of 2013 we had purchased 6 new Con-Tech mixers. I was on 2 DOT paving projects where the spec for mainline paving is a 2 inch max. The Con-Tech mixers hands down mixed and unloaded at a much faster and steady pace. The design in the collection hopper and the chutes allow the Con-Tech mixers to really put the mud out. The contractor actually asked to have some of the drivers slow down the discharge pace. This was very impressive to watch as they were unloading side by side to other comparable brands and same year mixers. When it comes to paving the goal is to get the trucks unloaded as fast as possible to keep the paver moving at a steady pace. The new designed Con-Tech mixers performed excellent."

Jason Henrich
GCC READY MIX
BELLINGHAM MN



Justin, Jason, & John Fraser

"We own several Con-Tech BridgeKing mixers and have run them several years now. The thing I like about Con-Tech is that they come out to see you. These guys listen to your ideas on how to make things better, and then build those ideas into their products. They have included some of my ideas in the design of their product and that has been important to me. Also, their BridgeKing is built with the highest quality and their service is excellent!"

John Fraser
JD CONCRETE
MITCHELL, SD

"I have been very happy with my Con-Tech mixers. This has been the first time I have been able to put my new mixers directly into service; normally I would have to spend 3 to 4 days per truck getting them to our specifications. Con-Tech listens to the customer, and did everything as requested, and did it correctly! Attention to detail is second to none, and I definitely recommend Con-Tech mixers to anyone who demands excellence."

Bill Bitsman
SAGINAW, MI



"We bought our first Con-Tech mixers in 2008. Not only are they great to work with, they build one of the best mixers in the industry. Quality mixer, built right, with attention to detail."

Paul Chaves

TRANSPORTATION MANAGER
APPLE VALLEY READY MIX



"We are very pleased with the business relationship we share with Con-Tech. We have found their service to be dependable, reliable, and they stand behind what they sell. Their attention to detail and willingness to listen to our needs is extremely important to our company."

Kenny Henderson

OPS MANAGER
GREENHILL CONCRETE
OWASSO, OK



"In the last four years that we have had BridgeKing mixers, repairs have been minimal and they are performing great on the road. Con-Tech has listened to our input and implemented that into their product."

Denny Bingham

LONG TIME MIXER MECHANIC
MINNESOTA

"I have been driving mixer trucks for 35 years. The Con-Tech mixer loads and unloads better than any mixer I have driven in the past. I like the Con-Tech controls, they are very responsive."

Kent Kruger

MIXER DRIVER, AVR READY MIX



"We are totally happy with the way our Con-Tech mixer has performed over several seasons. The guys at Con-Tech have paid attention to the little details that can end up saving time and money. Our driver Kevin loves the way the mixer charges, and discharges. Sales and service is excellent, and very helpful with knowledgeable parts help for all our mixer fleet needs. We like Con-Tech!"

Larry Wittenburg

SPRINGVILLE READY MIX
SPRINGVILLE, IA





"We are a family owned business serving the Asheville Market in Western North Carolina. The terrain is very steep and mountainous and our new Con-Tech mixer has proven to be up to the challenge. We evaluated several mixers before choosing Con-Tech. The extreme duty components that are built to last coupled with Con-Tech's experience and technical ability to configure the mixer that best suits our needs is the reason we chose them. During the evaluation process it became clear to me that Con-Tech shares our companies core values to be responsive, innovative, willing to go the extra mile and a genuine commitment to customer service that in the end produces a superior product"

Bart Jones
CAROLINA READY MIX

Often Imitated, Never Duplicated.

Con-Tech[®] MANUFACTURING, INC.



Find us on:



"We are a small family owned company with attention to detail. Usually when we purchase a piece of equipment we intend to have it for a while. Our new Con-Tech mixer seems to fit right in with our operation. The fabrication and attention to the small details are superb! Sales and service are excellent! The truck was delivered on time and to all specifications. Our next purchase will be a Con-Tech mixer"

Alan Bernhardt
B & W READY MIX
WATONGA, OK



"We have run our Con-Tech BridgeKing mixers for five years and have been impressed with the quality, reliability, and performance."

Jerry Marney
OPERATIONS MANAGER
CONCRETE SUPPLY
BUILDERS CHOICE CONCRETE

Con-Tech Headquarters

67079 170th Avenue
Dodge Center, MN 55927
phone 507-374-2239
fax 507-374-1094

Texas Branch (Dallas)

5843 Curtis Dr., Suite 500
Allen, TX 75002
phone 972-941-8592
fax 972-941-8911

Georgia Branch (Atlanta)

104 Hudson Industrial Dr.
Griffin, GA 30224
phone 770-229-1773
fax 770-227-3021

Illinois Branch (Chicago)

1016 Airpark Drive, Suite D
Sugar Grove, IL 60554
phone 507-374-2239

Ohio Branch (Cleveland)

38134 Western Pkwy, Unit #2
Willoughby, OH 44094
phone 507-206-7276